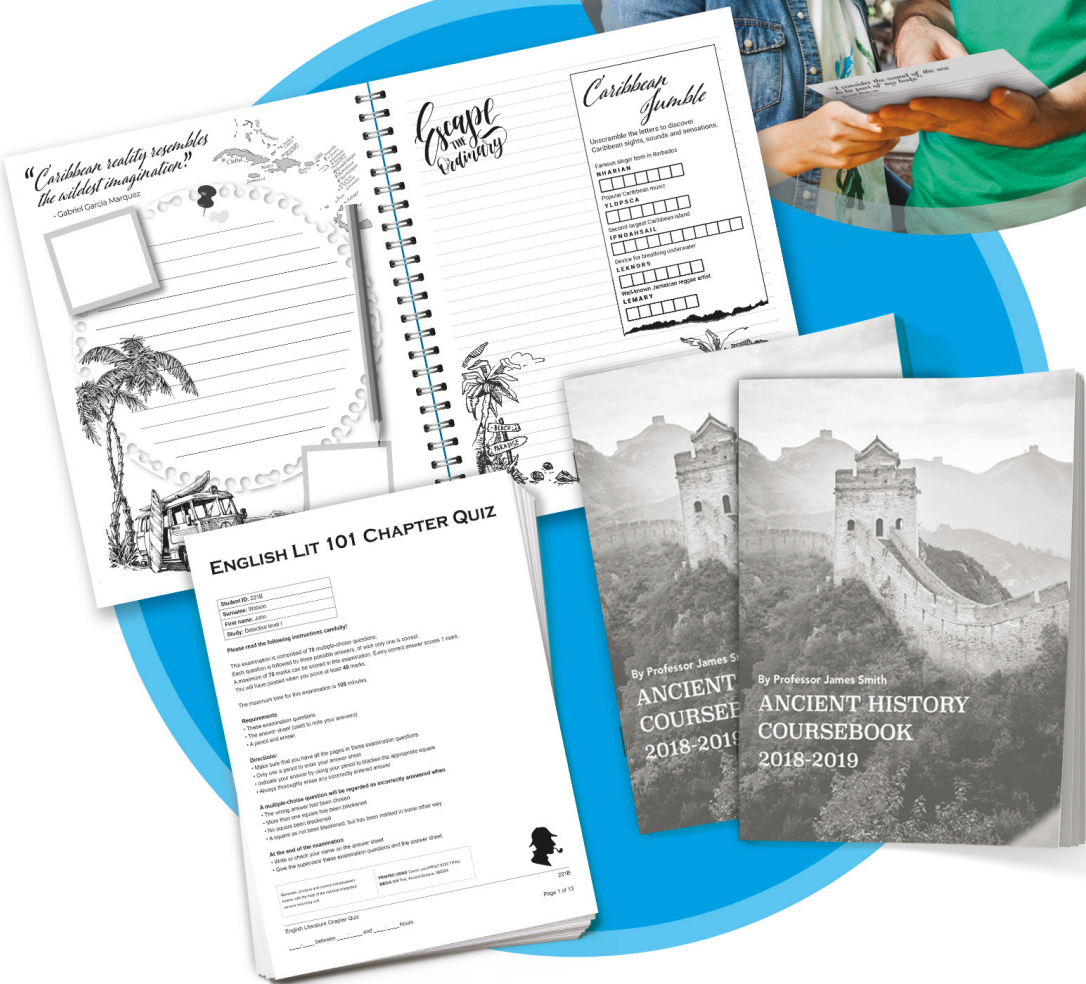




varioPRINT 140 SERIES

MONOCHROME PRODUCTION DIGITAL PRESSES



varioPRINT 140 SERIES

EFFICIENCY AND EXCELLENCE POWERFULLY ENHANCED

The varioPRINT 140 Series of monochrome digital presses is a true digital printing solution that's easy to use and delivers high-quality, consistent images while helping increase operator productivity. With a minimal footprint requirement, it fits in most operations and helps to reduce the environmental impact of your business.

Designed for in-plants and small to mid-size commercial print shops, the varioPRINT 140 Series provides the dependability and efficiency needed to allow you to focus on expanding your business.



varioPRINT 140 shown with optional accessories.



Integral Productivity

- Up to 140/130/115 ipm and a duty cycle up to 2.2 million impressions per month
- PRISMAsync Remote Manager for central job management of multiple digital presses
- Operator Attention Light¹ and Remote Control² app to easily monitor press status
- Monocomponent toner and DirectPress Technology all but eliminate quality degradation helping maximize uptime
- Up to 12,000³ letter-sized sheet input capacity for unattended production

Application Versatility and Quality

- Offset-like image quality and consistency via true digital printing with DirectPress Technology
- ScreenPoint Technology automatically converts color images to grayscale
- Intelligent, sensor-controlled, front-to-back registration
- Digital monochrome press with optional scan/copy features
- DPlink and KDKlink options allow integration into Xerox and Kodak workflows

Best-in-Class Sustainability

- Ozone-free printing
- Virtually no toner waste
- Smart energy usage via EnergyLogic Technology
- Reduced energy consumption with DirectPress and HeatXChange Technologies
- ENERGY STAR® Certified

¹ Optional.

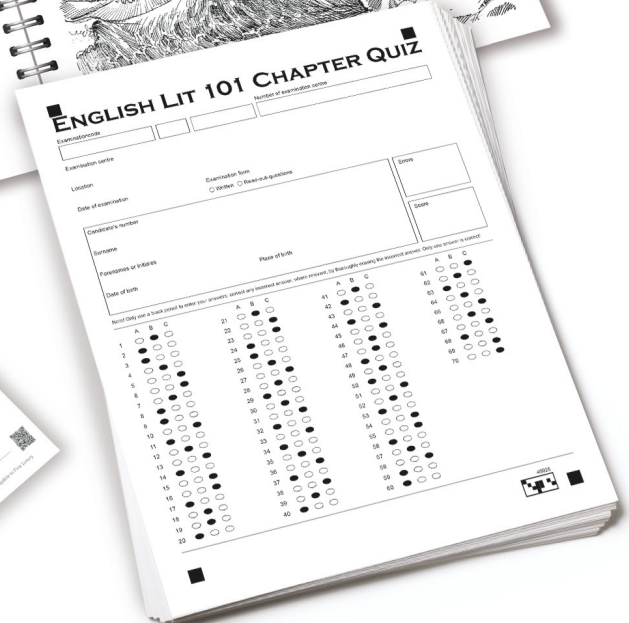
² Setup and data transfer outside of your network is required. For details, please contact your Canon Authorized dealer.

³ Maximum letter-sized capacity (20 lb. Bond) with ePIM and Duo Tray option installed in trays 3 and 4.

PERFORMANCE THAT DELIVERS

Outstanding reliability will give you peace of mind, thanks to innovative engineering and exceptional up-time. The varioPRINT 140 Series digital presses are robustly built to deliver the all-round performance your business demands.

The PRISMAsync print server's intuitive UI provides an easy-to-operate press that can help your entry-level and most experienced operators efficiently produce a wide-range of applications. This advantage allows you to meet today's tight turnaround times, whether your jobs are simple or complex.



PERFECT-FIT SYSTEM

QUICK PRINT/PRINT-FOR-PAY

The varioPRINT 140 Series meets the needs of the quick print market, delivering powerful opportunities with its high-quality printing/copying/scanning, reliability, and versatility, all in a small footprint.

The PRISMAsync Scheduler and up to 140 ipm speed help maximize quick turnaround times. Intuitive, simple user interfaces help to streamline prepress and reduce the learning curve, providing outstanding efficiency with multiple, in-line finishing options that can help you expand your business opportunities.

IN-PLANT

The varioPRINT 140 Series delivers the productivity, ease of use, and versatility your operation requires while helping reduce environmental impact. These presses support outstanding efficiency with enhanced copy/scan functions, security options, and seamless integration into most existing workflows.

To enhance productivity, customers can submit work to the in-plant via a wide variety of optional software solutions, including Canon's enterprise-wide print management leveraging uniFLOW and PRISMAdirect software.

COMMERCIAL PRINT

Image quality, durability for monthly print volumes of up to 800,000 impressions, and productivity make the varioPRINT 140 Series ideal for the commercial print industry. The PRISMAsync print server and Remote Manager helps keep operations smooth and intuitive for more results with fewer operators.

A generous input capacity of up to 12,000 sheets⁴ and automated workflow options help increase throughput. In-line finishing options offer white paper in, finished-product-out workflows, helping reduce touch points and errors while precise, high-capacity stacking is ideal for shops with offline finishers.



⁴ Maximum letter-sized capacity (20 lb. Bond) with ePIM and Duo Tray option installed in trays 3 and 4.

CONFIGURE FOR YOUR SUCCESS

PERFORMANCE THAT FITS

With respective print speeds of up to 140, 130, and 115 images per minute, the varioPRINT 140/130/115 monochrome digital presses can be easily configured to meet your requirements, from scanning to on-board editing to full, in-line production.

MULTIPLE SCANNING OPTIONS

Monochrome and color scanning capabilities let you offer flexible document digitization and archiving services. One-pass duplex scanner plus "Scan-to" options, including Scan-to-SMB, Scan-to-FTP, Scan-to-USB, Scan-to-Email, and Scan-to-DocBox, provide flexibility to support your scanning workflow.

WIDE RANGE OF MEDIA

The varioPRINT 140 Series provides efficient production on a wide range of stocks including plain, coated, textured, and carbonless substrates from 13 lb. Bond to 110 lb. Cover (50–300 gsm) in all trays, with automatic duplexing for all media up to 300 gsm.

VERSATILE PAPER FEEDING

Four paper trays are conveniently placed under the engine, conserving valuable floor space. For increased capacity and productivity, an optional, four-tray External Paper Input Module (ePIM), featuring air separation and suction feeding, can expand capacity up to 12,000 letter-sized sheets⁵ for hours of unattended production.

STREAMLINED FUNCTIONALITY

In-line finishing modules help you produce and finish more jobs without operator intervention, thereby shortening completion time and helping you to meet even the tightest deadlines.



⁵ Maximum letter-sized capacity (20 lb. Bond) with ePIM and Duo Tray option installed in trays 3 and 4.

INNOVATIVE TECHNOLOGY DELIVERS SUSTAINABLE PRODUCTIVITY



varioPRINT 140 shown with optional accessories.

1 DIRECTPRESS TECHNOLOGY

Converts digital data into a toner image in a single step, with no ozone emissions, fuser oil, or developer, and virtually no toner waste.

2 HEATXCHANGE TECHNOLOGY

Printed sheets are cooled and those to be printed are preheated in a single process, reducing energy consumption in this process by up to 30%. The cooling of printed sheets helps reduce curling and sticking for more reliable finishing.

3 ENERGYLOGIC TECHNOLOGY

As soon as sufficient energy is available, start-up is quick. It also helps ensure non-stop productivity for mixed-weight jobs.

4 MONOCOMPONENT TONER

Oil- and developer-free imaging helps ensure excellent image quality in a clean environment, without the need for costly ventilation systems or special filters.

5 PRISMAsync PRINT SERVER

An intelligent print server with an intuitive, graphical user interface shows production schedules at a glance, predicts run times, and indicates when consumables will need replacement. Driving productivity with a media-driven workflow that's uniform with other PRISMAsync-driven Canon digital presses.

6 SCREENPOINT AND SUPERCCELL TECHNOLOGIES

Optimize each individual page based on the type of content being printed, delivering razor-sharp details (180 lpi), nuanced images, and smooth gradients.

7 OPERATOR ATTENTION LIGHT⁶

Displays status of the press in a convenient way, so the operator quickly knows if production is moving smoothly or operator intervention will be required.

8 VACUUM FEEDING AND AIR SEPARATION

Helps provide reliable feeding from all trays on all media, which aids in reducing potential misfeeds when printing.

9 PAPER LOGIC TECHNOLOGY

Takes the guesswork and errors out of paper loading. Simply load paper in the orientation in which it's intended to be read.

⁶ Optional.

APPLICATION VERSATILITY

FINISHING OPTIONS⁷



Decurling

Reduces paper curl that can occur dependent on environment, media, and/or job parameters to delivery flatter sheets, improved stacking, and better runability in downstream finishers.



Document Inserting

This module enables insertion of slip sheets or preprinted covers for booklets and complex jobs.



Professional Punching

The numerous die patterns offered for in-line hole punching (including double punching) help increase productivity when producing various styles of ring- or wire-bound booklets.



High-Capacity Stacking

Realize maximum productivity with unload-while-run capability, helping to provide uninterrupted printing with stacking of up to 6,000 sheets.



Ring Binding

Utilize the GBC eWire Pro or Max Ring Binder to help automate the time-consuming process of ring or wire binding manuals, booklets, and reports.



Paper Folding

Offer promotional pamphlets, brochures, and more with the ability to produce Z-fold, C-fold, accordion fold, and double-parallel fold documents.



Staple and Saddle Finishing

Corner or double staple up to 100 sheets, saddle-stitch up to 100-page booklets, or stack up to 5,000 sheets of paper sizes up to 13" x 19.2". A side jogger helps keep media in neat straight or offset stacks.



Booklet Trimming

Help maintain high productivity with a large-capacity trim waste bin and on-the-fly waste removal for continuous production. These modules can combine with the Booklet Finisher to help operators produce professional, full-bleed booklets in-line.



Professional Booklet-Makers

Deliver professional-looking, lay-flat booklets with speed and simplicity using the SDD BLM300C for booklets up to 120 pages or the Plockmatic BLM50/35 for up to 200-page professional, square-folded, saddle-stitched booklets.



Finisher Bridge

Connect the SDD or Plockmatic professional booklet-makers to the Staple Finisher without having to sacrifice corner stapling or 2-/3-hole punching.

FEEDING OPTIONS



Internal Paper Input Module

Standard input capacity from the main engine cassettes is 4,000 sheets.



Bulk Tray Small Format Option for iPIM

Allows you to convert either or both bulk trays to Statement size, ideal for high-volume statement printing.



External Paper Input Module (ePIM)

Equipped with vacuum feeding and air separation, each tray supports media up to 12.6" x 19.2", 13 lb. Bond to 110 lb. Cover, and increases total media capacity to 8,600 sheets.



Duo Tray Option for ePIM

Converts tray 3 and/or 4 of ePIM to support two stacks of letter-sized media, increasing total letter-sized capacity of the press to up to 12,000 sheets.⁸



varioPRINT 140 shown with optional accessories.

⁷ All paper capacity numbers and finishing capabilities based on 20 lb. Bond (80 gsm) paper.

⁸ Maximum letter-sized paper capacity (20 lb. Bond) with ePIM and Duo Tray option installed in trays 3 and 4.



ADAPTABLE WORKFLOWS

PRISMAsync PRINT SERVER

A SINGLE POINT OF CONTROL

Canon's PRISMAsync print server consolidates control of your production workload into a single hub. Whether preparing simple jobs such as scan-to-file or complex jobs that require mixed media, you can easily perform a range of tasks from a single, consistent interface, helping reduce training time and increase productivity.

ENABLE TARGET MARKETING

PRISMAsync print server provides powerful variable data printing (VDP) support with record-based editing and management and full compatibility with industry-standard VDP workflows, including PDF/VTI⁹ and optional PPML.⁹

SMOOTH WORKFLOW INTEGRATION

PRISMAsync is powered by Adobe PDF Print Engine⁹ with Mercury RIP architecture. It integrates with JDF and JMF tools to help streamline and accelerate processes, reduce costs, and help you manage and control your operations. PRISMAsync DPLink and KDKLink options offer easy integration of varioPRINT 140 Series digital presses into Xerox® FreeFlow® MakeReady or Kodak® Smartboard environments.¹⁰

⁹ Adobe PDF Print Engine (APPE) is standard for varioPRINT 140/130 and optional for varioPRINT 115. APPE is required for PDF/VTI, PPML, and Page Numbering support.

¹⁰ Not all job ticket features are supported on all engine configurations.

¹¹ Optional.

INTUITIVE OPERATION AND TOTAL PRODUCTION CONTROL

PRISMAsync offers intelligent job scheduling controls for uninterrupted production and smooth workload planning. The Job Scheduler provides up to eight hours of production planning, allowing the operator to monitor multiple jobs, receive custom notifications, and change priorities.

COPYING, SCANNING, AND EDITING MADE EASY

PRISMAsync's Easy Copy and Book Copy features provide increased efficiency in high-volume copy and scan environments. Operators can quickly add page numbers to PDF printouts with prefix and suffix, adjustable font, font size, and position.⁹

Subset scanning and page-level editing¹¹ let operators build and manipulate even complex jobs right on the PRISMAsync press console. Store and easily access jobs that require regular reprinting with the optional DocBox.¹¹

MANAGE JOBS REMOTELY

With PRISMAsync Remote Manager, operators can submit print jobs, edit job properties, manage queues, and even reroute jobs among multiple PRISMAsync-driven engines. This web-based, multipress tool provides remote monitoring from either your workstation or mobile device on your network.

HELP SECURE YOUR PRODUCTIVITY

With security top of mind, you can rest easier with these PRISMAsync features and options:

INTEGRITY CHECKER¹²

Using McAfee® Embedded control, Integrity Checker helps manage, continuously track, and validate the applications that are run on PRISMAsync.

E-SHREDDING¹²

Proper disposal of sensitive or confidential electronic data is imperative to prevent inadvertent disclosure. Electronic data shredding (or e-shredding) can help prevent unwanted recovery of previously printed, scanned, and copied documents.

USER AUTHENTICATION

PRISMAsync provides user authentication via heavily encrypted passwords. It also enables the System Administrator to define and manage tasks that limit operators to performing only those within set boundaries.



DESIGNED FOR SUCCESS

No matter what the print environment, all agree: No service call is the best service call. Engineered with reduced service time in mind, DirectPress Technology improves image consistency while helping to reduce maintenance and increase reliability and system uptime. Printer Operation Care allows safe and easy parts replacement by the operator—no training required.

The varioPRINT 140 Series is designed for robust, reliable performance through the most demanding and time-consuming jobs. It will help you meet tight deadlines and deliver consistent quality prints that help retain satisfied customers.

¹² Optional.

SUSTAINABILITY THROUGH TECHNOLOGY

The varioPRINT 140 Series is engineered with a strong environmental focus, designed with energy conservation, resource conservation, and pollution minimization in mind.



CLEANER, GREENER, AND OZONE-FREE

The streamlined printing process—with no electrical charge used—provides a cleaner work environment, without ozone emissions, selenium, fuser oil, or developer, and virtually no toner waste or particle emissions.



CLOSING THE ENERGY LOOP

HeatXChange recycles the heat used to fuse toner onto paper, reducing energy consumption in this process. The low-fusing temperatures allow the machine to run cooler, helping keep your print room cooler, further reducing energy consumption.



FIRST-TIME-RIGHT OUTPUT

Easy operation, reliable media handling, and Paper Logic are just some of the features that help reduce waste by maximizing first-time-right prints.



SMARTER ENERGY USAGE

EnergyLogic's smart balancing of energy provides a fast first-print/copy-out time and no stoppage during mixed media jobs—only a speed adjustment if needed. The result is extra productivity, saving both time and energy.



BUILT TO LAST

Much of the steel used in these systems is recycled, and main parts are designed to last the life of the machine. This helps to conserve resources, reduce waste, and limit the environmental impact of both logistics and service.



EXPAND YOUR OPPORTUNITIES

READY FOR GROWTH

The state-of-the-art varioPRINT 140 Series offers end-to-end solutions and outstanding day-to-day reliability that can help your operation achieve the desired success.

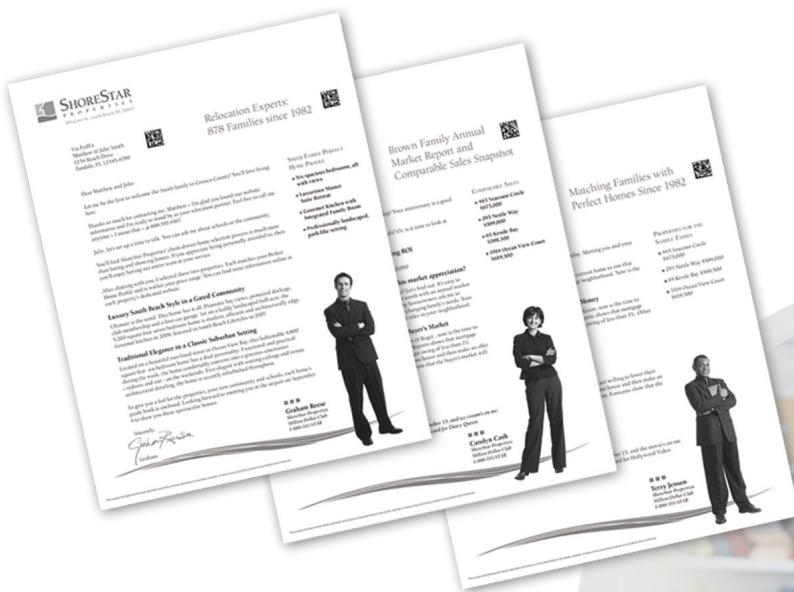
Produce a broad range of print products, including brochures, saddle-stitched and square-folded booklets, direct mail, business cards, presentation and training materials, and flyers. Maximize your uptime with first-time-right output that delivers outstanding image consistency and increased reliability.

With the flexibility of the PRISMAsync print server and scalable, productive feeding and finishing options, this press can be configured to help you accomplish your goals.

TEAMING WITH CANON

When you select the varioPRINT 140 Series monochrome digital presses, you're also choosing Canon. With over 80 years experience in the design and development of innovative imaging technology, Canon seizes every opportunity to add to this experience, constantly improving its technologies to stay at the forefront of innovation.

Canon understands that each business and print room is unique, with its own needs. Canon and its Authorized Dealers can bring new ideas and applications that can help you inspire your customers and improve the productivity of your business.



SPECIFICATIONS

		varioPRINT 140	varioPRINT 130	varioPRINT 115
Print Speed (Duplex)	8.5" x 11"	Up to 140 ipm	Up to 130 ipm	Up to 115 ipm
	11" x 17"	Up to 73 ipm	Up to 68 ipm	Up to 60 ipm
Monthly Duty Cycle		Up to 2.3 Million	Up to 2.1 Million	Up to 1.8 Million
Print Resolution	dpi	600 x 2400	600 x 2400	600 x 2400
	lpi	200	200	200
Paper Capacity ¹³	Standard	4,000	4,000	4,000
	Maximum ¹⁴	12,000	12,000	12,000
Paper Size	Standard	5.5" x 7.17" to 12.6" x 19.2"	5.5" x 7.17" to 12.6" x 19.2"	5.5" x 7.17" to 12.6" x 19.2"
Paper Weight ¹⁵		13 lb. Bond to 110 lb. Cover	13 lb. Bond to 110 lb. Cover	13 lb. Bond to 110 lb. Cover

OPTIONS

Feeding Options

- Bulk Tray Small Format-A1
- External Paper Input Module-D1
- Duo Paper Tray-C1
- Form Assist Module II
- Document Insertion Unit-N1

Finishing Options

- Staple Finisher Pro-W1
- Booklet Finisher Pro-W1
- Puncher Unit-BS1

- High Capacity Stacker-H1
- DFD Adapter and Finisher Bridge-A1
- PowerLift-A1
- Paper Folding Unit-J1
- Multi Function Professional Puncher-B1
- Booklet Trimmer-F1
- Two-Knife Booklet Trimmer-A1
- Output Tray
- Decurler-C1
- SDD Square Fold Booklet-Maker

- SDD Square Fold Booklet-Maker with Two-Knife Trimmer
- SDD BLM300C Booklet-Maker
- Plockmatic BLM50/35 Booklet-Maker
- GBC eWire Pro
- MAX Ring Binder

Print Server

- PRISMAsync Print Server

¹³ Capacity based on 20 lb. Bond.

¹⁴ Maximum capacity is for letter-sized sheets with ePIM and Duo Tray option in trays 3 and 4.

¹⁵ See Customer Expectations Document and Approved Media List for detailed media specifications and supported media detail.

 USA.CANON.COM/PRODUCTIONPRINTING

Canon



As an ENERGY STAR® Partner, Canon U.S.A., Inc. has qualified these models as meeting the ENERGY STAR® energy efficiency criteria through an EPA recognized certification body. ENERGY STAR and the ENERGY STAR mark are registered U.S. marks. Canon and the GENUINE logo are registered trademarks of Canon Inc. in the United States and may also be registered trademarks or trademarks in other countries. varioPRINT and PRISMA are registered trademarks of Canon Production Printing Netherlands B.V. All other referenced product names and marks are trademarks of their respective owners. All output is simulated. Specifications and availability subject to change without notice. Not responsible for typographical errors.

©2021 Canon U.S.A., Inc. All rights reserved.

0921R1-vP140SRB-PDF-IH

